



13 CLOCKHOUSE MEWS PORTISHEAD BS20 7HS

GOODMAN
& LILLEY





Designed around a communal courtyard styled garden, this rarely available ground floor one bedroom apartment is situated in a convenient location, close to local amenities.

Offering affordable retirement living, this delightful apartment offers a sunny aspect living space complemented by a well proportioned bedroom, bathroom and use of a secluded south facing garden perfect for relaxing and ideal for retired buyers.

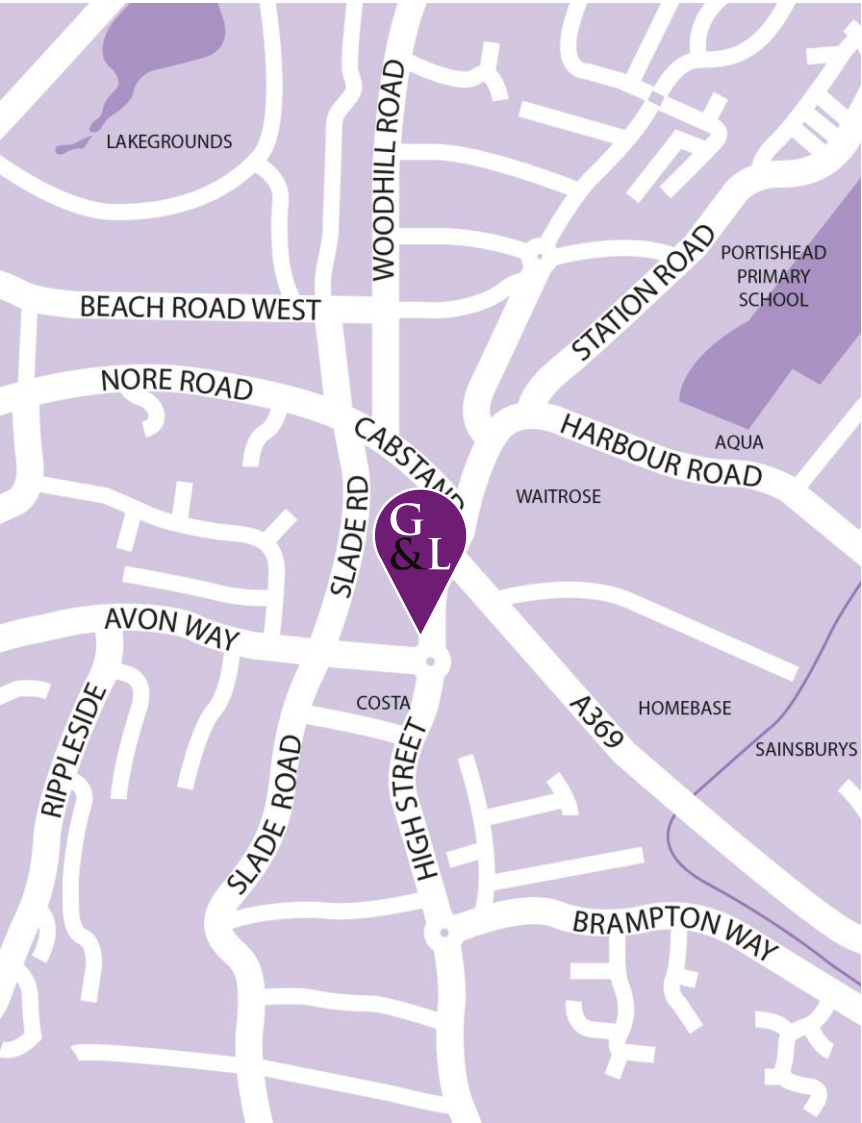
This ground floor home comes with the added benefit of emergency 24 hour pull cords in every room.



-
- * Ground Floor Apartment
 - * Superbly Located
 - * One Double Bedroom
 - * Communal Courtyard Gardens
 - * Allocated Parking
 - * Emergency 24 Hour Pull Cords



£139,995



Cabot Circus 30 Minutes



Suspension Bridge 15 Minutes



Henleaze 20 Minutes

TRANSPORT



Bristol Airport

25

Minutes



M5, Junction 19

7

Minutes




Temple Meads

30


Minutes

EPC BAND C & D

CONNECT WITH US



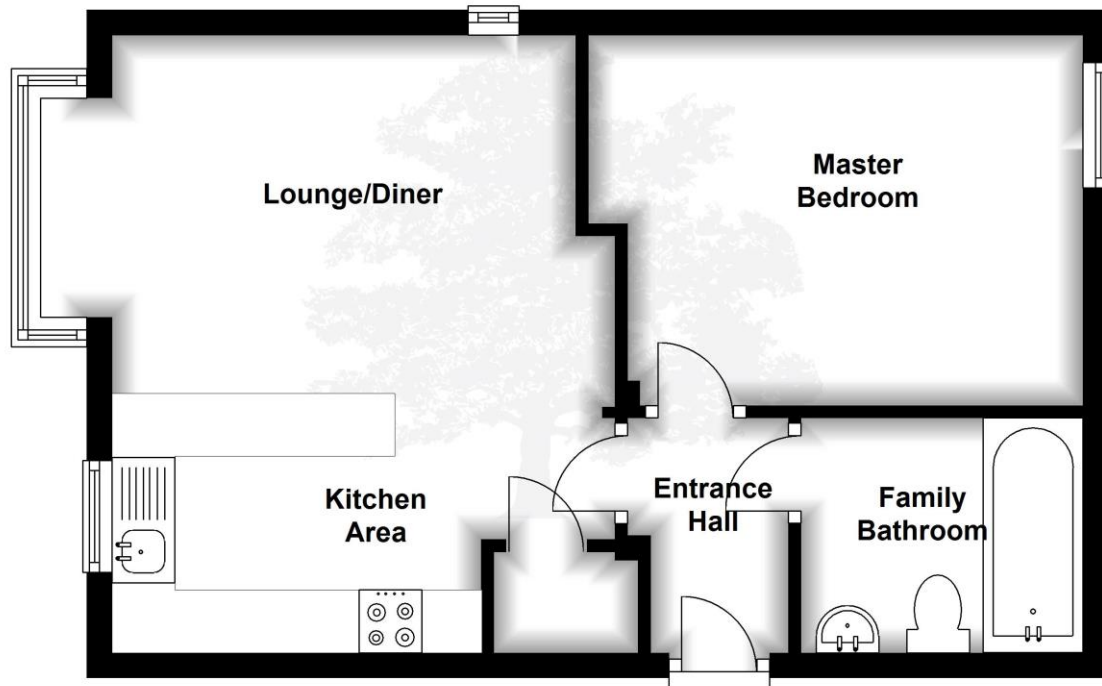
Goodman-Lilley



@Goodman_Lilley

Ground Floor

Approx. 38.2 sq. metres (411.4 sq. feet)



Total area: approx. 38.2 sq. metres (411.4 sq. feet)

HENLEAZE - 0117 2130777
henleaze@goodmanlilley.co.uk

PORTISHEAD - 01275 430440
sales@goodmanlilley.co.uk



WWW.GOODMANLILLEY.CO.UK

These particulars are for general guidance only. They do not form or constitute any part of an offer or contract. Goodman & Lilley has not carried out structural surveys of the property. The services, appliances or specific fittings mentioned in these details have not been tested. Every attempt is made to ensure accuracy, however all photographs, measurements, floor plans and distances are for illustrative purposes only. They must not be relied upon when purchasing carpets and or other fixtures & fittings. Lease details, service charges and ground rents are given as a guide only. They should be checked and confirmed by a licensed solicitor prior to exchange of contracts. The copyright of all details, photographs and floor plans remain exclusive to Goodman & Lilley.